

SMT
Fall 2019

Lab Inspection Results



34 conducted



91.22% average score



199 failed items

Most common failed items

Chemical Safety Data Sheets (SDS) maintained and readily available at all times employees are present?

Lab workers received institutional safety training for the hazards present in the laboratory?

Satellite accumulation area inspections are occurring on a weekly basis and are documented

Up-to-date inventory maintained for all hazardous materials?

Lab Specific Safety Plan readily available and laboratory workers are familiar with it?

Lab workers received supplemental laboratory-specific safety training for the hazards present in the laboratory?


Have they received proper DOT shipping training for shipping biologicals and/or with dry ice as appropriate?

Status of
Audit Action
Items as of
10/22/19

FAILED		ACTION ITEMS			
items	Assigned	in Progress	past due	not due yet	Resolved
199	298	22	99	22	141
	Percentage	7%	33%	7%	47%

Training for
Qtr 1 FY 20
vs FY19

Type	Qtr 1 FY20	Qtr 1 FY19
Office ergonomics, other types	26	72
Facilities (3 classes)	92	128
RA	45	49
Biosafety (online)	27	12
Lab safety	204	217



Occupational Safety Programs

iAuditor and
Building
Inspections

25 audits (45 buildings)

105 findings with ~70
complete

Reoccurring general
findings

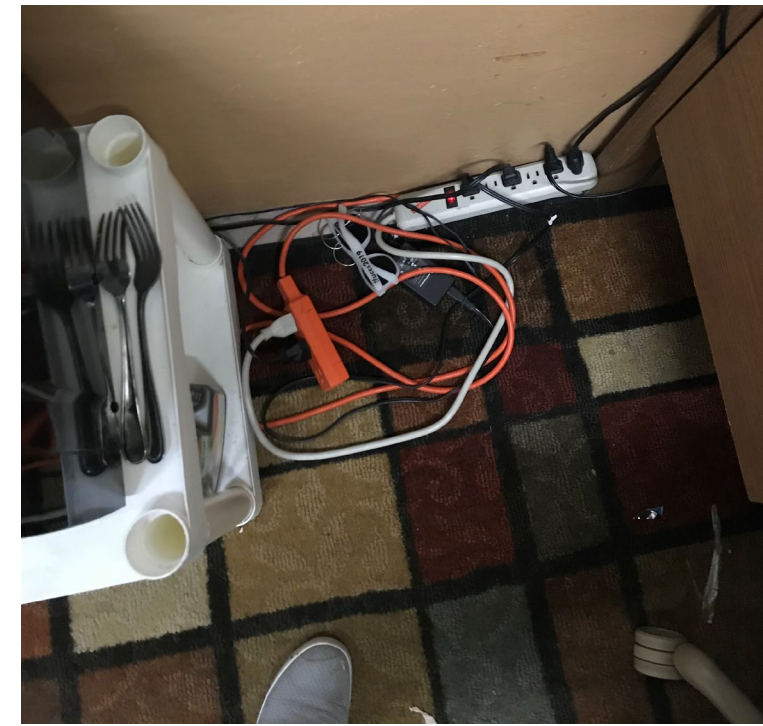
General Housekeeping

- Excessive – Storage should be neat and manageable.
 - Too much storage leads to combustible loading
- Aisles
 - Storage should have defined aisles to allow access to safety, electrical, mechanical, and utility equipment.
- Hallways and stairwells must be unobstructed
- Do not store within 18” of the ceiling away from the wall
- Cannot store items in electrical rooms



Extension Cords

- NOT permanent wiring
- Do not overload
- Do not modify
- Do not plug power strips into them
- Multi-plugs need to have surge protection
- Do not use damaged cords



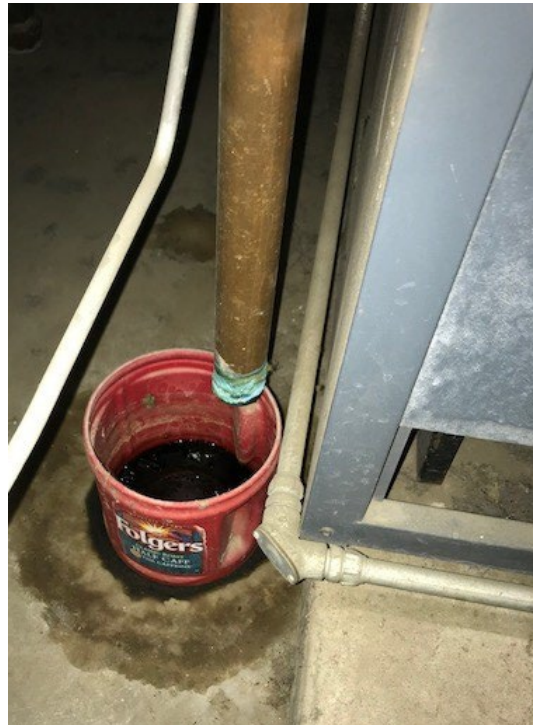
Fire Equipment

- Fire doors cannot be propped open
- Do not block fire extinguishers, AEDS, alarms/strobes, smoke detectors, egress, etc.
- No open flame devices (Candles, incense, etc)



Chemical Labeling

- All chemicals must be labeled
 - Including consumer products



Recent Activities/Incidents on Campus

- Drills with CSFD (Chemistry, Biology)
- Battery Lab Fire
- Field Safety Day (great job Ashley)
- Other campus incidents – bus leak, car fuel leak



Waste
Management

E-waste

Lighting waste

Batteries

Hazardous waste

EHS Strategic Plan



Goal 1.1: Develop a more focused and intentional approach to communicating with the campus community.



Goal 2.1: For each program/planned event develop a purpose statement to include the reason(s) for the activities and the stakeholders served.



Goal 5.1: Be more intentional about technical education/continuing education for EM-EHS staff and continue training about diversity and inclusion.



Goal 6.1: Expand outreach into more populations on campus while continuing to provide safety education and program development so that faculty, staff and students routinely incorporate safety into their work and planning processes



Goal 8.1: Develop and execute a series of community partnership exercises.

Round Table Discussion