

Personal Fall Protection – Inspection Guide

This guide is to help you inspect personal fall protection equipment including harnesses and lanyards.

IMMEDIATELY take the equipment out of service if any deficiencies are found or if any equipment fails inspection.

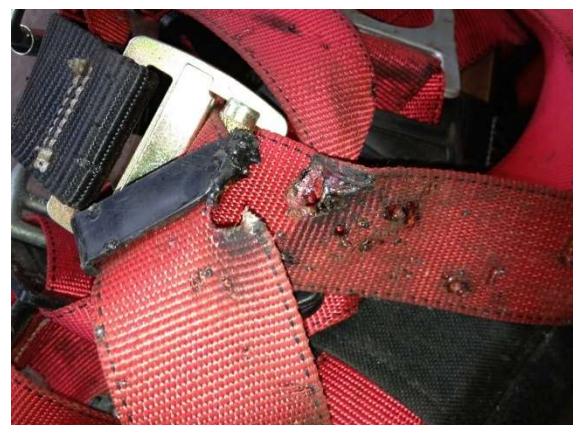
Definitions



Webbing Inspection

This must a visual and touch inspection of the harness as not all damage is immediately recognized through sight. Be sure to check both sides of the webbing for

Pass	Fail	What to Look For
		Cuts, nicks, tears
		Broken fibers
		General deterioration
		Modifications (additional straps, in house stitching, etc.)
		Fraying/Abrasions
		Discoloration
		Hard or shiny spots
		Uneven thickness
		Mold or mildew build-up
		Missing straps
		Stretching
		Burned, charred or melted fibers
		Additional markings with permanent marker

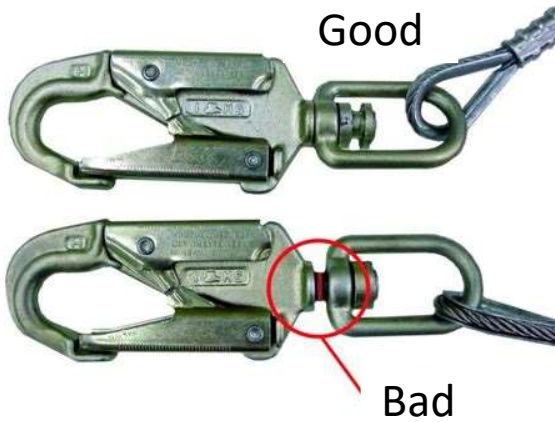


Stitching Inspection

Pass	Fail	What to Look For
		Pulled stitches
		Missing stitches
		Hard or shiny spots
		Cut stitches
		Discolored stitches
		Excessive fraying



Hardware Inspection

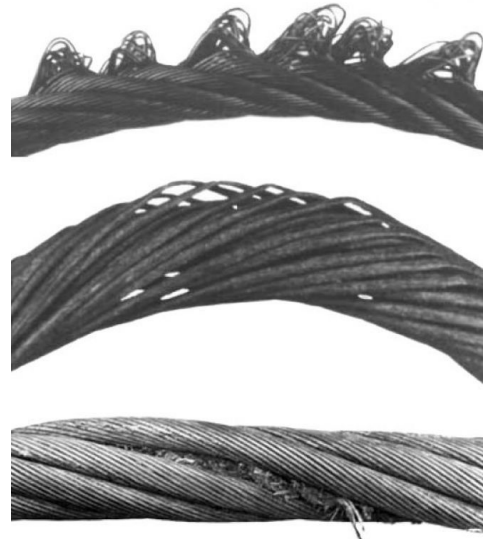
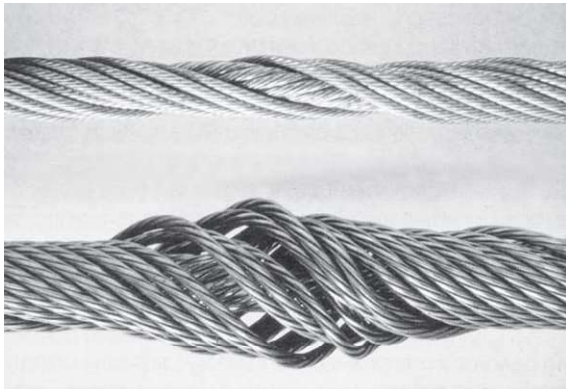
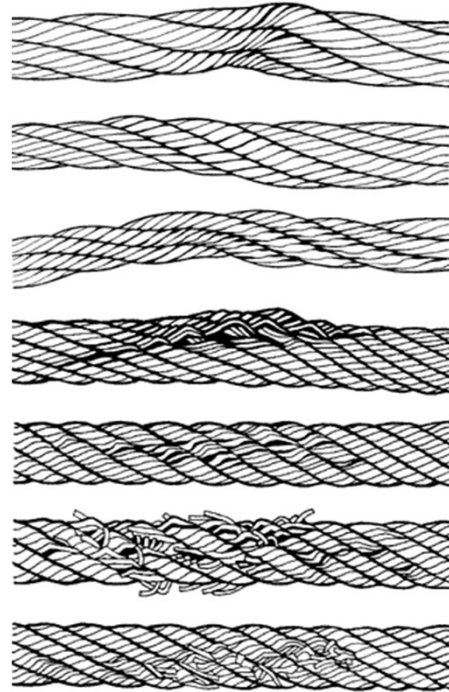


Pass	Fail	What to Look For
		Distortions in the metal (Twists, bends)
		Rust or Corrosion
		Broken Grommets
		Modifications (additional holes, welds, etc.)
		Roller of tongue turns freely on the frame
		Bars are straight
		Springs work and release easily
		Clips properly work
		Sharp or rough edges
		Cracks or breaks
		Brake mechanisms work on SRL



Cable Inspection

Pass	Fail	N/A	What to Look For
			Fraying cables
			Split cables
			Bent or Kinked
			Birdcaged
			Corroded
			Rusted



Label Inspection



Pass	Fail	What to Look For
		Missing labels
		Illegible labels